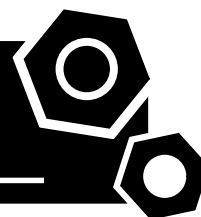


Generator set
Sound-proof type
WPS650S

SPECIFICATIONS



1 Standards & Conditions

Design Standards

The designs and the productions are in conformity with:

- Conformance Europeenne (CE)
- China Compulsory Certification (CCC)
- ISO8528-1995
- GB/T2820-1997

Environmental Operating Conditions

- Installation place: Outdoors or indoors (well ventilated).
- Ambient temperature: -25°C to 50°C. The coolant heater is needed when the temperature is below 5°C
- Humidity: Less than 80%.
- Altitude: Below one thousand (1000) meters above sea Level.

Factory Inspection

- Inspection items.
- Protection devices working test.
- Starting ability in normal temperature.
- 50% rated power load moment capability.
- Voltage deviation and speed variation: 0%, 25%, 50%, 75%, 100%, 110% Load.

Painting Process

- Painting process specifications and colors are based on the manufacturer's standard.
- The customer could also choose the color which the manufacturer offers.

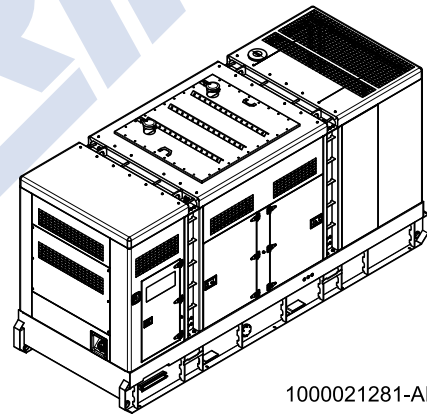
2 General Features

- Perkins engine 2806A-E18TAG2
- Close coupled to a Stamford alternator HCI544F
- Microprocessor control module PLC-7320
- DMA main circuit breaker: 3-Phase 1000A
- Rotate speed governor: Electronic fuel injection governor
- Excitation System: Self excited
- A.V.R.Model: AS440
- Key switch

- Emergency stop switch
- ATS (automatic transfer switch) receptacle
- 2x12V sealed for life maintenance free battery
- Lockable battery isolator switch
- Powder coated canopy
- 50°C radiator
- Oil pump on the engine
- Steel base frame with forklifts
- Vibration isolators between the engine/alternator and base frame
- Dry type air filter
- Base fuel tank for 8 hours running
- Drain points for fuel tank
- Operation Manual / Parts List / Specifications

3 Equipment Specification

General technical data

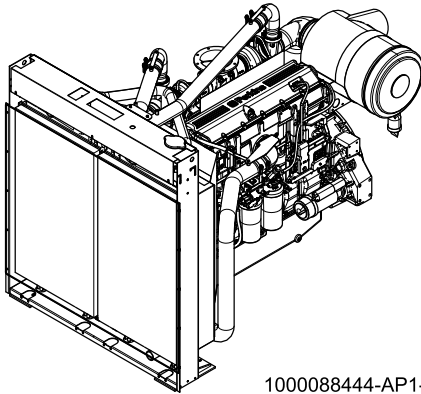


1000021281-AP1-A5

Model.....	WPS650S			
Structure type	R			
Tank capacity.....	945L			
Dry weigh.....	6580.8kg			
Noise level @7m	N/A			
Dimensions L×W×H.....	4692×1700×2487.6mm			
Standby Power	715kVA/572kW			
Prime Power	650kVA/520kW			

Voltage	380V	400V	415V	440V
Ampere	987.6A	938.2A	904.3	852.9A

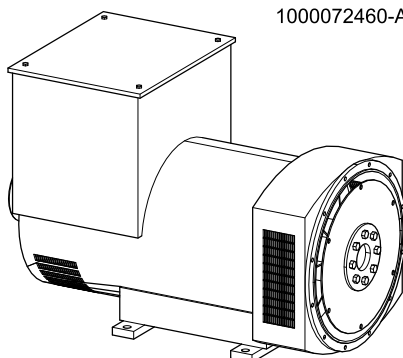
Diesel Engine



1000088444-AP1-A3

Engine Manufacturer/Brand.....	Perkins
Engine Model.....	2806A-E18TAG2
Dimensions L×W×H.....	2545×1536×1807.5mm
Dry Weigh (approx.).....	2050kg
Number of Cylinders.....	6
Bore.....	145mm
Stroke.....	183mm
Displacement.....	18.13L
Compression Ratio.....	14.5
Type of Injection.....	MEUI
Intake System.....	Turbocharged, air-to-air charge cooled
Intake Resistance.....	≤6.4kPa
Cooling System.....	Water cooled
Fan.....	Pusher
Battery Voltage.....	24V
Type of Fuel.....	BS2869 class A2 or BS EN590
Type of Oil.....	API CG4 or APEA E5
Oil Capacity.....	62L
Type of Coolant.....	Glycol Mixture
Coolant capacity.....	61L
Back Pressure.....	≤6.9kPa
Standby Power.....	628kW
Continuous Power.....	584kW
Fuel Consumption(100%load).....	132L/h

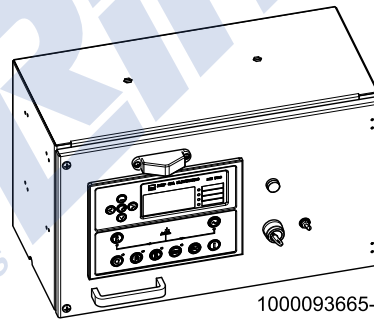
Alternator



1000072460-AP1-A1

Alternator Manufacturer/Brand.....	Stamford
Alternator Model.....	HCI544F
Exciter.....	Brushless
Cooling Fan.....	Cast alloy aluminum
Windings.....	100% copper
Insulation Class.....	H
Winding Pitch.....	2/3
Terminals.....	12
Drip Proof.....	IP23
Altitude.....	≤1000m
Overspeed.....	2250 rpm
Air Flow.....	1.035m³/s(50HZ), 1.312m³/s(60HZ)
Voltage Regulation.....	±1.0%
Total harmonic TGH / THCat no load < 1.5 % - on load < 5%	
Telephone Interference.....	THF<2%;TIF<50

PLC-7320 Control System



1000093665-AP1-B2

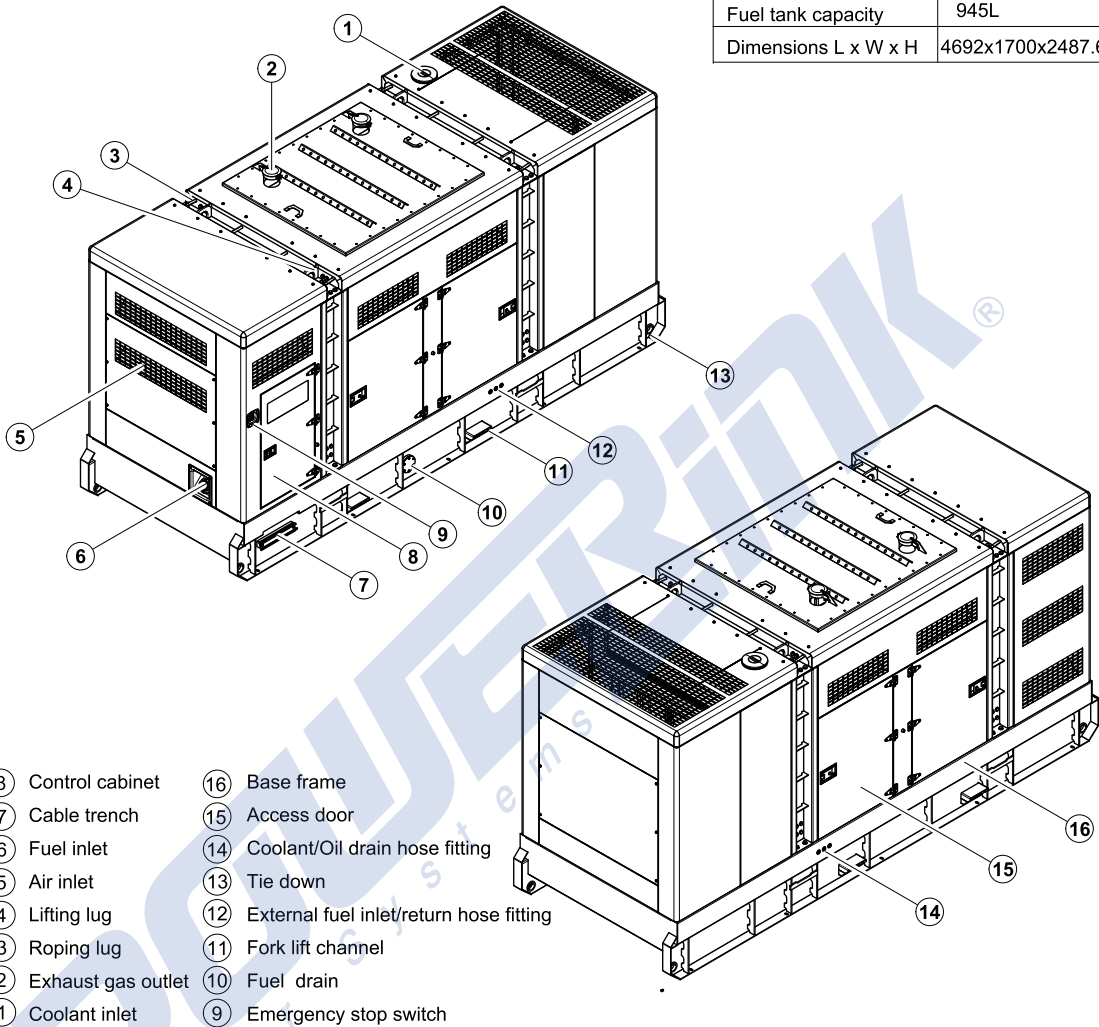
PLC-7320 is an advanced control module based on micro-processor, containing all necessary functions for protection of the genset and the breaker control. It can monitor the mains supply, and automatically start the engine when the mains is abnormal. Accurately measure various operational parameters and display all values and alarms information on the LCD. In addition, the control module can automatically shut down the engine and indicate the engine failure.

- Microprocessor control, with high stability and credibility
- Monitoring and measuring operational parameters of the mains supply and genset
- Indicating operation status, fault conditions, all parameters and alarms
- Multiple protections; multiple parameters display, like pressure, temp. etc.
- Manual, automatic and remote work mode selectable
- Real time clock for time and date display, overall runtime display, 250 log entries
- Overall power output display
- Integral speed/frequency detecting, telling status of start, rated operation, overspeed etc.
- Communication with PC via RS485 OR RS232 interface, using MODBUS protocol

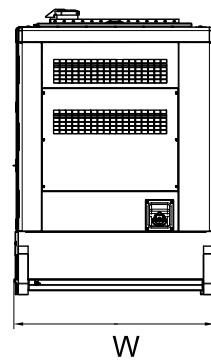
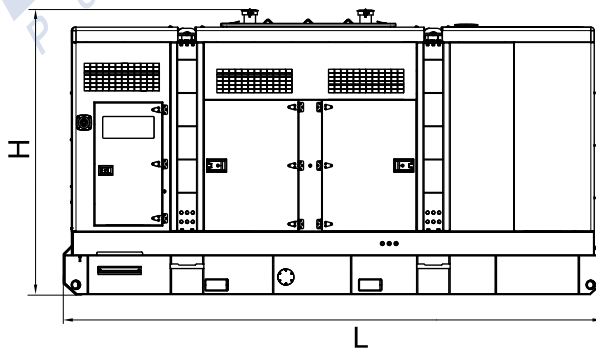
4 Overall Dimensions

1000021281-DR1-A5

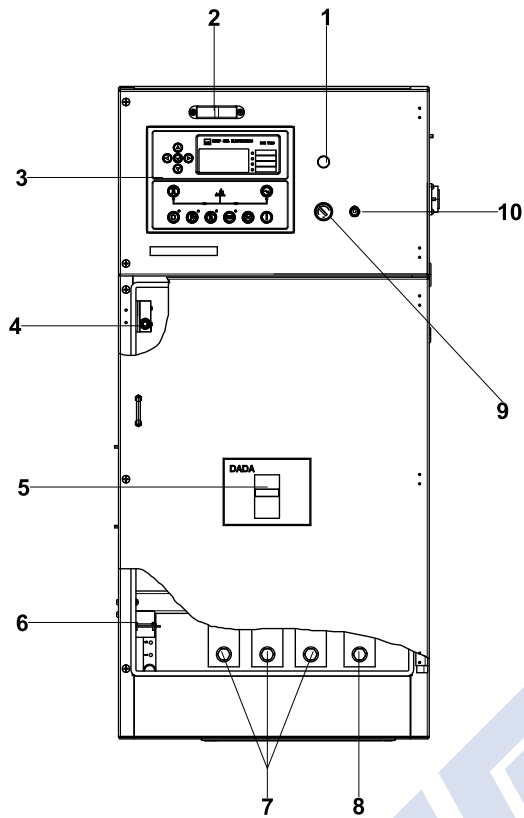
Dry weight	6580.8kg
Fuel tank capacity	945L
Dimensions L x W x H	4692x1700x2487.6mm



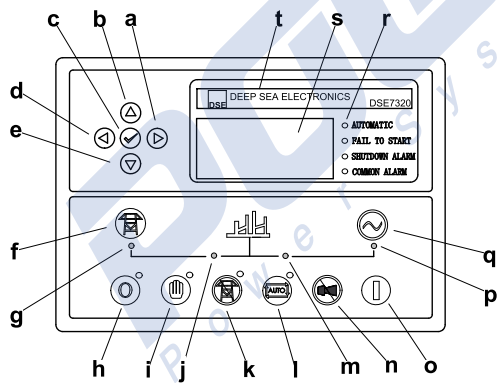
- | | |
|----------------------|---|
| ⑧ Control cabinet | ⑬ Tie down |
| ⑦ Cable trench | ⑭ Coolant/Oil drain hose fitting |
| ⑥ Fuel inlet | ⑮ Access door |
| ⑤ Air inlet | ⑯ Base frame |
| ④ Lifting lug | ⑰ External fuel inlet/return hose fitting |
| ③ Roping lug | ⑱ Fork lift channel |
| ② Exhaust gas outlet | ⑲ Fuel drain |
| ① Coolant inlet | ⑳ Emergency stop switch |



5 Control System



Control & Field wiring cabinet



Control Panel

Ref.	Description
1	Charge indicator
2	Control panel lamp
3	PLC-7320 Control module
4	Limit switch
5	Main circuit breaker
6	ATS communication interface
7	Live wire terminals
8	Neutral wire terminal
9	Key switch
10	Control panel lamp switch

a	Button (next page)
b	Button (increase value / previous item)
c	Button (accept)
d	Button (previous page)
e	Button (decrease value / next item)
f	Button (transfer the load to the mains supply, when in Manual mode only)
g	Mains supply available LED
h	Stop / Reset button
i	Manual button (Manual control mode)
j	Mains supply on load LED
k	Test button (Test mode)
l	Auto button (Auto mode)
m	Genset on load LED
n	Mute/Lamp test button
o	Start button (Manual)
p	Genset available LED
q	Button (transfer the load to the genset, when in Manual mode only)
r	Alarm LED (4 alarm items)
s	LCD display
t	Control module name

1000021281-A5-E

06.2011

POWERLINK[®]
Power Systems

<http://www.powerlinkgenset.com>

E-mail: info@powerlinkgenset.com

*Specification may change without prior notice. For more info.,
contact Power Link or your local distributors please.*